

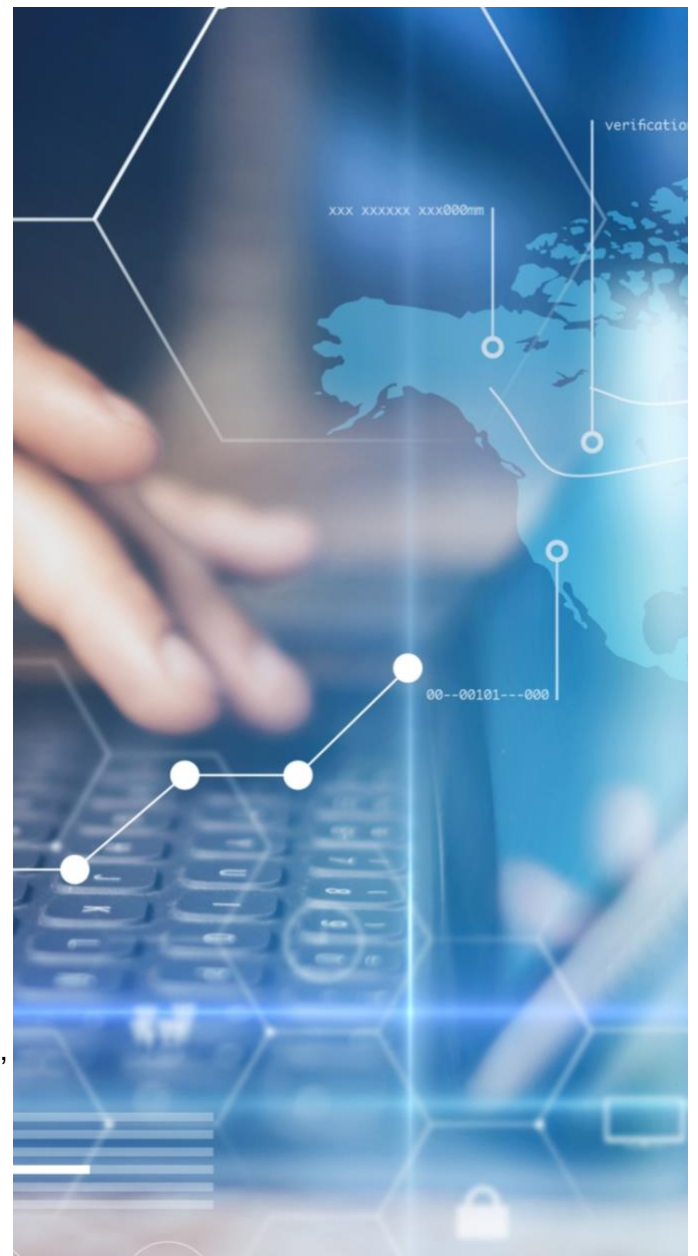
## Case Study: Leading Government Agency Transforms Cumbersome Paper Records into Fast & Streamlined Laboratory Information Management System (LIMS) through Agile Implementation

### CHALLENGE

A U.S. federal agency responsible for ongoing laboratory inspection of regulated products relied primarily on a paper-based process to record sample analyses but this recording process varied across the agency's labs, and business engineering protocols were not standardized into a single, compliant automated platform. To remedy this, the agency procured a core LIMS, but it needed customization to meet the agency's evolving needs, so the agency sought integration and implementation assistance.

### STRATEGY & SOLUTION

The agency leveraged Precise's subject matter expertise and depth of understanding about the agency's lab practices to address the needs of both LIMS strategic stakeholders and end-users. By applying rapid-prototyping and the Agile approach, Precise collected information from the agency about unique workflows and processes to design a next-generation approach for managing lab information and integrations. Best practices were identified, daily by laboratory specialists to perform enhanced analyses. While the overarching objective was standardization, site-specific and process-specific needs were accommodated through specific configurations or workflows within the system.



## OUTCOME

The customization and implementation of a LIMS solution enabled this agency's regulator and scientific staff to more efficiently and effectively identify, analyze and evaluate within a shared digital and compliant system all regulated products that require laboratory analysis. This resulted in:

- standardized and streamlined processes
- optimized and standardized procedures and workflows
- customized site- and process-specific workflow configurations
- improved records keeping
- integration of electronic information
- direct upload of instrument data
- reduced human error by eliminating manual entry of data
- avoidance of time-wasting and costly mistakes



Interested in Partnering with Precise?

**CONTACT US TODAY**

[precise-soft.com](http://precise-soft.com) | 301.340.1418