

# Precise Software Solutions, Inc. Capability Statement

## We Are

An SBA 8(a) Program Participant. We are an innovative, small business with a proven record of success delivering services and solutions to government and commercial organizations.

We are recognized and rewarded for agility and practicality, and are committed to meeting the highest expectations as well as delivering the best value to our clients.

## Our Partners Say

*“Throughout the contract period, PSSI has been a collaborative team player and has demonstrated strong Information Technology (IT) capability in various roles through all phases of the Software Development Life Cycle (SDLC). In addition, we are very much impressed by PSSI’s commitment and dedication to delivering value to their customer.”*

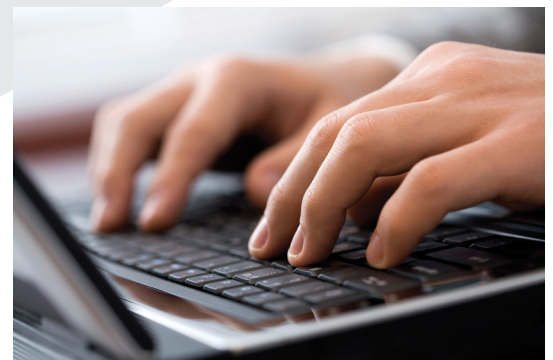
## Services and Solutions

Precise Software Solutions, Inc. (PSSI) specializes in the following areas.

- **Strategic Consulting Services.** We are proud to be trusted advisors to Senior Technology Executives in capitalizing upon the efficiencies offered by technological advancements and ensuring the integrity of the IT systems and programs. We offer executive advisory and strategic consulting in the areas of IT Strategies and Governance, Portfolio Management, and Enterprise Architecture.
- **System Modernization and Integration.** We specialize in large-scale complex IT integration delivery to modernize legacy systems and to unify historically siloed technical implementations across heterogeneous technology platforms.
- **Emerging Technology Adoption.** We explore opportunities to apply emerging technologies with proven processes to improve business efficiency and agility. Several of our current projects focus on mobile, cloud computing, and predictive analytics.
- **Data Management.** We support all aspects of data management utilizing proven processes, procedures, and technologies. Our data analytics capability derives intelligence from structured and unstructured data; our data integration methodology leverages reusable integration patterns to streamline integration process, reduce overall cost, and deliver predictable results.

## Our Clients Include

- US Food and Drug Administration (FDA)
- US Agency for International Development (USAID)
- US Internal Revenue Service (IRS)
- Health Resources and Services Administration (HRSA)
- International Monetary Fund (IMF)
- Financial Industry Regulatory Authority (FINRA)
- SRA International, Inc.
- Lockheed Martin Corporation



*Precise*

1455 Research Blvd. Suite #315 Rockville, MD 20850 301.340.1418  
<http://www.precise-soft.com> [info@precise-soft.com](mailto:info@precise-soft.com) DUNS: 078315631

U.S. Small Business Administration  
**SBA**  
8(a) Certified  
Your Small Business Resource

## Our Clients Say

*"I want to thank you for your monumental effort to get us this far in the automation of inspections. I know how long and hard you all work and I can't thank you enough. I hope it is apparent to you how important this system is to us and the public health of the American people. We have essentially been doing pen and paper work to conduct inspections since 1906. With the advent of the new inspection system we can now arm every Investigator with the knowledge and expertise of all of our experts on every inspection. The new approach will also go a long way into making the inspections we do faster, more efficient, more comprehensive, and consistent. I am very excited about this system and the people I admire and respect most in our organization share my excitement."*



## Success Stories

### • Information Technology Investment Management (ITIM) Automation

We supported the FDA Office of Information Management and Technology (OIMT) in establishing an ITIM automation platform to promote streamlined, effective, transparent, customer-centric practices as well as efficient processing and delivery of IT solutions. We automated key ITIM business processes; we launched FDA's first Service Catalog covering all IT services offered; and we incorporated agile methodology into FDA's Enterprise Performance Life Cycle (EPLC) for the Agency's IT projects.

### • System Modernization and Integration

We supported the FDA's Mission Accomplishment & Regulatory Compliance Service (MARCS) program, which is FDA's largest modernization effort, in initially defining Roadmap and Architecture Framework and subsequently successfully executing task orders to integrate and modernize more than 30 legacy applications for FDA's mission critical regulatory functions. Our team covers the full life cycle of the program including Development, Modernization, and Enhancement (DME) as well as Operations and Maintenance (O&M).

### • Automated Mobile Inspection Solution

We played a critical role in the development of a comprehensive mobile inspection platform utilizing mobile technology and intelligent questionnaire to standardize and automate FDA's field work operations. We devised a comprehensive mobile strategy including overall mobile architecture, Mobile Device Management (MDM) solution, online/offline data synchronization, and mobile security implementation; we delivered the mobile inspection platform to over 4,000 investigators across the country.

### • Mobile Adoption Standard Operating Procedure (SOP)

We supported USAID in the effort to establish a verified and repeatable process for developing, provisioning, and publishing mobile applications. We experimented with MaaS360 Enterprise MDM server as well as Apple iOS App Store and Google Play Store; we delivered step-by-step SOP that covers the entire lifecycle of adopting mobile technology.

### • Oracle Development and Database Administration

We led a very successful and highly visible effort to migrate 48 databases that support 34 mission critical applications within the Office of Regulatory Affairs (ORA) from Oracle 10g to Oracle 11g. We completed all migration within six months, on average two databases migrated per week with almost weekly production releases; we reduced system outage window by 83% to minimize the impact on business operations.

